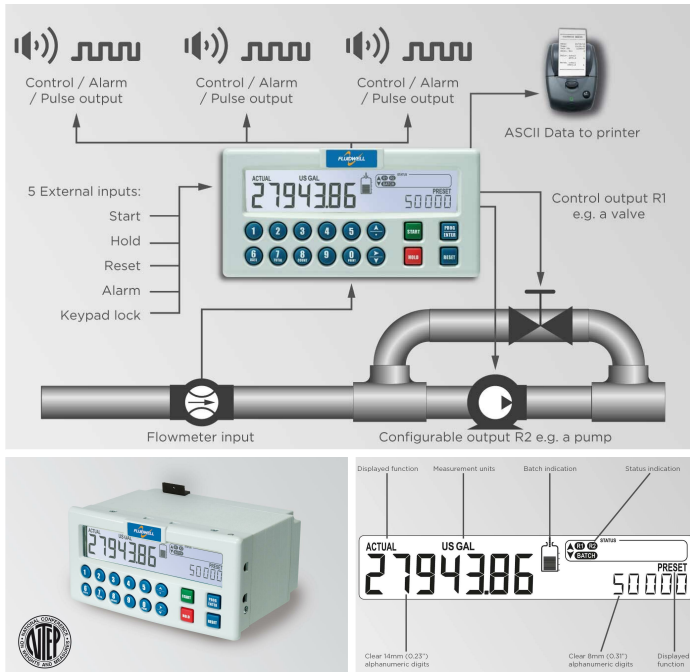


N414 DIN Panel mount - Legal-for-trade Batch Controller

with **NTEP Certification** and receipt printer driver



Features

- Full numerical keypad.
- Shows actual value, preset value, batch process indication, relay status indication and measuring units simultaneously.
- Five control inputs for remote START, HOLD, RESUME, keypad lock and external alarm.
- 7 large digits (14mm, 0.56") for actual value, flow rate and total.
- 10 smaller digits (8mm, 0.3") for preset value, accumulated total and batch count.
- Selectable on-screen engineering units for volumetric or mass: L, m³, USGAL, IGAL, ft³, bbl, kg, Ton, lb.
- The batch process can be visualized with the tank fill/spill symbol. This graphical representation can be enabled or disabled. When the batch overfills the preset quantity by 2.5% the graph will show two overspill arrows indicating this condition.
- Easy operation to enter a batch value and to control the process.
- Easy configuration with clear alphanumeric display.
- No-flow monitoring.
- Automatic overrun correction.
- Bright LED backlight.
- Auto backup of settings and running totals in EEPROM memory.
- Ambient temperature: -20°C to +60°C (-4°F to 140°F).
- Aluminum IP67 (NEMA Type4X) DIN front panel of 144 x 72mm (5.67" x 2.83").
- A just-in-time back-up stores the latest batch information in case of a power failure.
- Various handheld and panel printers and other [accessories](#) are available for this product.

Product description

The legal-for-trade N414 batch controller combines accurate batching and user-friendly operation. It is certified by [NTEP](#) for wholesale and custody transfer applications in the United States of America. The numerical keypad allows simple and fast changing of the preset batch quantity.

Fluidwell stands for simplicity and reliability which is now available in N414.

Advantages

- Receipt printing function after each batch.
- Save time and cost with the easy to operate numerical keypad.
- Familiar easy operation with the Fluidwell "Know one, know them all" configuration structure, saving time, cost and aggravation.
- Key information at a glance as the display simultaneously shows actual value, preset value, batch process indication, switch point indication and measuring units.
- Easy installation with the rugged aluminum DIN-size panel mount enclosure.

Applications

- Accurate batching or filling of liquids where the batch size changes frequently and easy ticket printing on location is required.
- The N-Series offers the perfect solution for batch control applications where a user-friendly instrument is required. Whether you focus on its clear display information, the very easy to operate numerical keypad or the easy menu-driven configuration structure, you've got to have a Fluidwell.

Product specifications

Signal Inputs

Flowmeter Inputs

- Pulse type inputs:
Reed-switch, open collector, NAMUR, NPN/PNP pulse, Sine wave (coil), active pulse signal.

Status Inputs

- Remote control: start / hold / resume/ keypad lock / external alarm.

Supply

Power Supply

- 24V DC.
- 110 - 230V AC.

Sensor Supply

- 8.2 - 12 - 24V DC.

Signal Outputs

Pulse outputs

- Function: Scaled pulse output according to accumulated or batched total.
- Type: One configurable and field replaceable, very heavy duty, mechanical relay output (NO-NC) and three configurable transistor outputs.

Alarm outputs

- Function: Switched in case of a no-flow, external or system alarm.
- Type: One configurable and field replaceable, very heavy duty, mechanical relay output (NO-NC) and three configurable transistor outputs.

Analog outputs

- None.

Control outputs

- Function: Relay 1 is fixed as the main batch

Hazardous Area

Intrinsically Safe

- For safe areas only, for Intrinsically Safe applications we recommend the F-Series batch controllers.

Communication

- Function: Send a "Print receipt" command after every batch.
- Protocol: ASCII data.
- Interface: RS232 or RS485 2-wire.

control relay. Relay 2 and the transistor outputs can be configured as 1- or 2-stage batch control output.

- Type: Two field replaceable, very heavy duty, mechanical relay outputs (NO-NC) and three configurable transistor outputs.



sales@fluidwell.com | T. +31 (0) 413 - 343 786

We're happy to answer any questions about our products and services.
Just send us an email or give us a call.